

# Wireless Pressure-Mapping: Enhancing Quality of Life



## Minimize Risk & Maximize Quality of Life

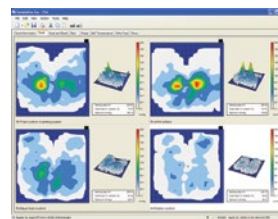
The BodiTrak2 Pro Pressure-Mapping System is used by seating rehabilitation professionals around the world to assess and document their patients' pressure management, posture, and comfort needs, and to develop personalized surface and positioning solutions based on objective data.

### More Effective Assessment Times

User-friendly SmartFabric sensor technology provides instant and accurate interface pressure data for seat, seat and back, OR pads, bed, feet or balance. It is also a great biofeedback training tool.

### Evidence-Based Decision-Making

Powerful data collection helps identify patient requirements for standard or customized product solutions.



High Risk

Low Risk

### WIRELESS WIZARD

Easy-to-use wireless technology provides consistent, reliable comparisons of patient pressure profiles. Just add a battery or plug into a USB port and the system is ready to use.

BodiTrak2 Pro is an IoT device.



Looking for a portable, **affordable** and easy-to-use alternative to the more fully-featured BodiTrak2 Pro? Consider BodiTrak2 Lite—it helps visualize pressure risks and comfort needs, but does not include comprehensive assessment features.

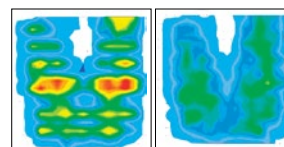
# Pressure-Mapping: Reducing Risk & Improving Well-Being



According to research conducted at the University of Pittsburgh, pressure mapping combined with clinical reasoning can reduce the incidence of pressure injuries by 12 percent.

"Our findings suggest that clinicians should incorporate the use of pressure mapping into their clinical practice to guide them in the process of wheelchair cushion selection for people at high risk of developing pressure ulcers."<sup>1</sup>

- **step-by-step assessment tool**
- **guides you through patient data, assessment, pressure-mapping and reporting**
- **standardizes patient information**
- **communicates effectiveness of surface choices and positioning solutions**
- **ensures complete, documented assessments**
- **organizes evaluations by date in one file**



High Risk      Low Risk

## WIRELESS WIZARD—SAVING TIME & INCREASING EFFECTIVENESS

Assess clients with the freedom of wireless technology—easily test solutions wherever clients enjoy life. BodiTrak is an IOT device and can be used in direct or router-connected modes.



Specification	Wheelchair
Size	22" x 22"
Sensing Area	18" x 18"
Sensing Cells	1" or 0.5" square
Weight Capacity	5 to 550 lbs.
Adjustable Alarms and Settings	Timer, Alarm Volume, Exit, Risk, and Gradient
Flexible Data Gathering	Scan or Record & play-back pressure information
Warranty	Two Years

Specification	Wheelchair
Smart Fabric Material	Stretch nylon and polyester
Connectivity	Wireless, USB Compatible
Latex Free	Yes
HIPPA Compliant	Yes
HL7 Compliant	Yes
CE 0413	Yes
ISO 13485 Certified	Yes

<sup>1</sup> Ana Allegretti, PhD; David Brienza, PhD; Margo Holm 2 PhD, OTR/L Department of Rehabilitation Science and Technology<sup>1</sup> and Department of Occupational Therapy, School of Health and Rehabilitation Sciences, University of Pittsburgh

**For further information about BodiTrak2 systems, please call 800.822.3553 or visit boditrak.com**

Vista Medical, LTD  
A PatienTech Company  
Winnipeg, MB Canada  
800.822.3553  
204.949.7678  
boditrak.com  
info@vista-medical.com

