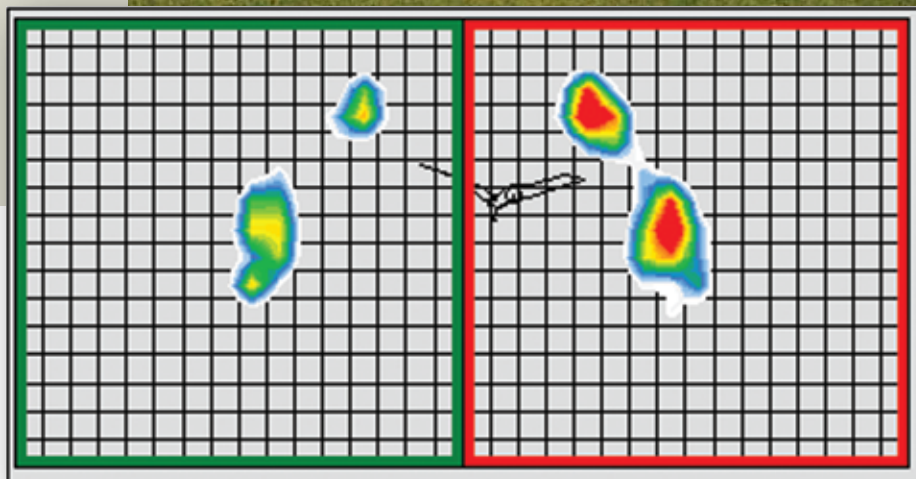




SHIFT • System

A thin, portable system for capturing center balance during a golf swing.

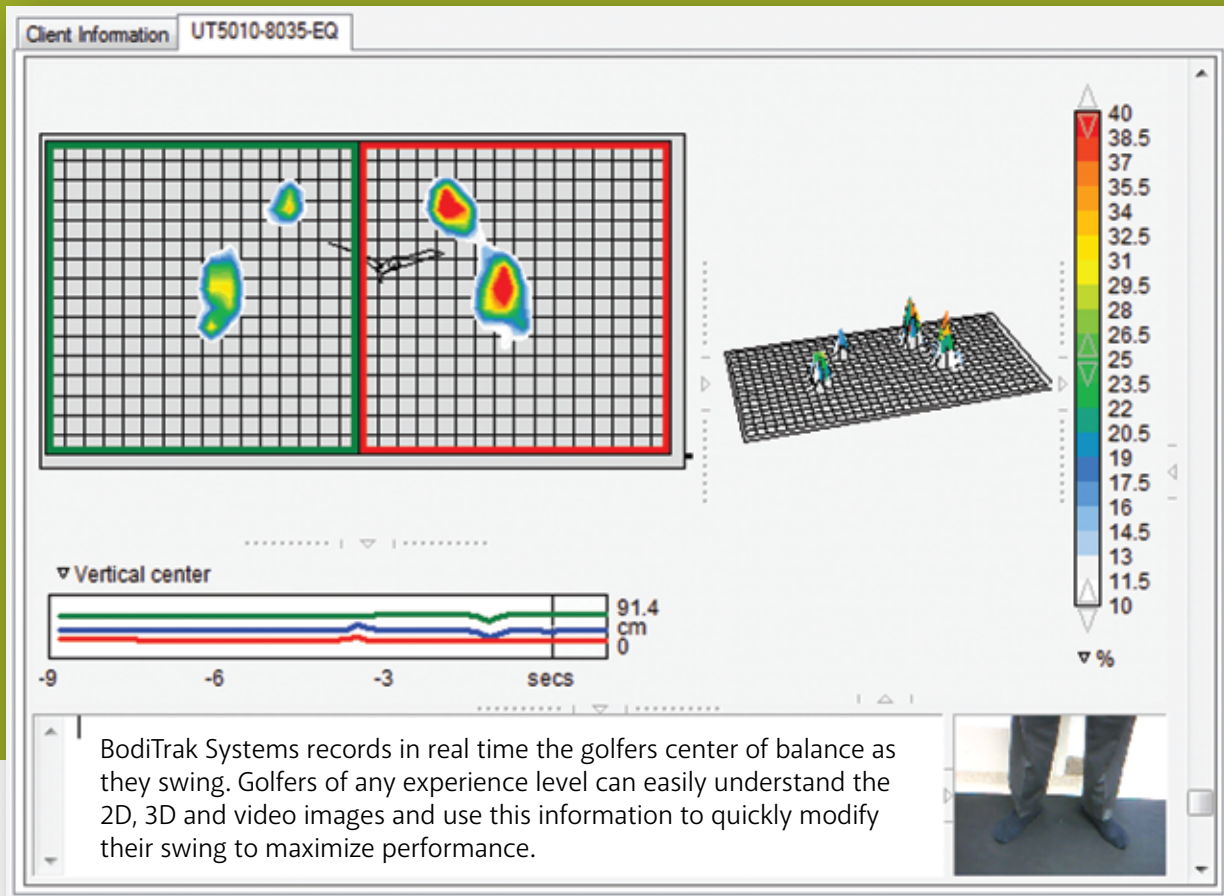
TIP: "At the foundation of every good golf swing is good balance. To find the correct balance, it's essential to know where your weight should be during the Address, Top of Swing and Finish of your swing."^{*}





SHIFT-System

Captures a golfer's balance pattern Indoors, Outdoors, Uphill, Downhill, On the putting green and In the sand trap. It's flexible, roll up design makes it very easy to setup, use and move to the next hole or golf course. BodiTrak balance systems have been used for nearly a decade in rehabilitation medicine research.



For more information contact
Terry Hashimoto
506-478-0441

www.BodiTrak.com



PatienTech

800-822-3553

*Quotation by: Lynn
Marriott Golf.com

Printed in USA 2013 rv1